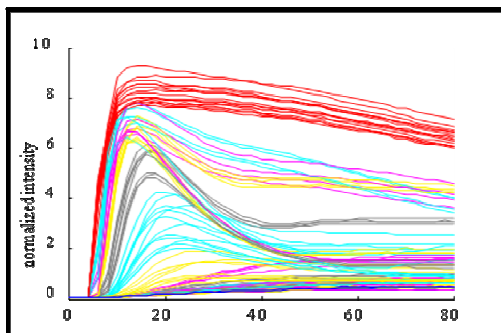


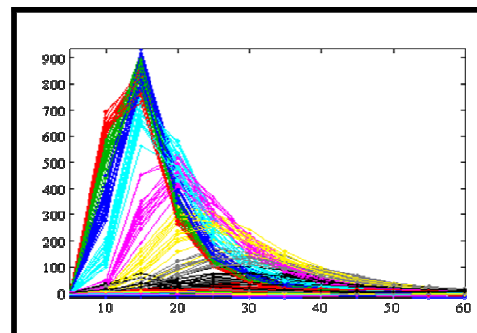
Introducing... FlashFluor™



The FlashFluor™ is a cell-based screening platform for measuring dual-color kinetic readouts with multiple reagent additions. FlashFluor™ can interleave fluorescence and luminescence kinetics for powerful multiplexed assays. Combine Ca⁺² flux, ion channel, aequorin, and luciferase assays for true high content data. The technology was developed by a leading biopharma and licensed to Etaluma to offer the next generation of FlashFluor™ for your research.



Fluo-4 Calcium Flux



Aequorin Luminescence

FlashFluor™ is designed with best-in-class excitation, emission, and detection optics. High sensitivity means that assays run economically, using less cells and less reagents. Full flexibility in pipetting and image acquisition gives you control over your assays.

Interleaved Fluorescence & Luminescence



etaluma